

KRINNER



Technical Description KRD 30

MACHINE SPECIFICATIONS

Special advantages

- High installation torque (8000 Nm) in relation to the weight
- Compact dimensions for space-limited installation situations
- Gasoline engine advantage in terms of emission regulations
- High torque, wide speed range
- Convenient transport and storage area
- Quick-change system on the rotating head and on the guide clamps
- Prepared for the Dokukit for the documentation according to DIN EN 12699
- Easy to maintain, rugged technology

Technical specifications

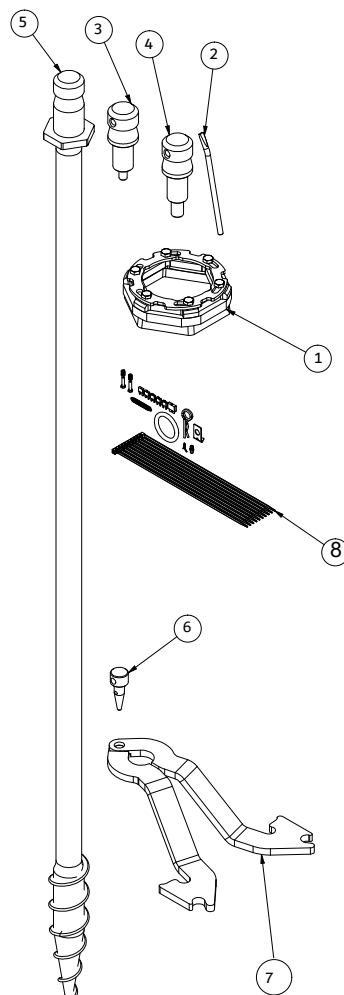
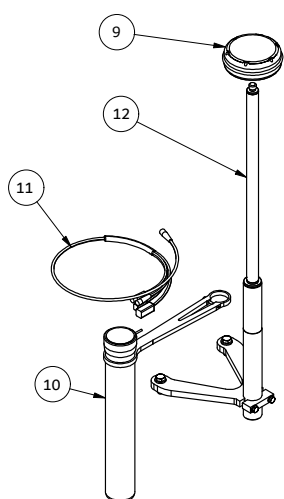
Width		900 mm
Length		2080 mm
Height	Transport	2080 mm
	Maximal	3500 mm
Weight		1100 kg
Engine	Performance	21,6 kW
	Speed	3600 U/min
	Fuel	Benzin
Driving speed		2,6 km/h
Torque		8000 Nm
Rotation speed of rotating head	1 Gear to 8000 Nm	16 U/min
	2 Gear to 4000 Nm	32 U/min
	3 Gear to 2000 Nm	64 U/min
Gun mount lifting		2,4 m
Insertion diameter		500 mm
Connecting flange	Floating position	200 daN
	Hydraulic downwards $200 + 2,5 \cdot \text{Druck}$ [bar]	400 daN (P80bar)
	Hydraulic upwards $- 200 + 5,7 \cdot \text{Druck}$ [bar]	600 daN (150bar)
Media connection on the rotary head		Water/ compressed air
Permitted terrain slope	Downward in direction of motion	10°
	Upward in direction of motion	15°
	Loading via ramps max	20°
	Transverse to the direction of motion	8°
	with trailer	8°
Surrounding temperature		-15° bis +40°
load capacity		200 kg
Trailer	vertical load	75 kg
	trailer load	750 kg

STANDARD MACHINE ACCESSORIES

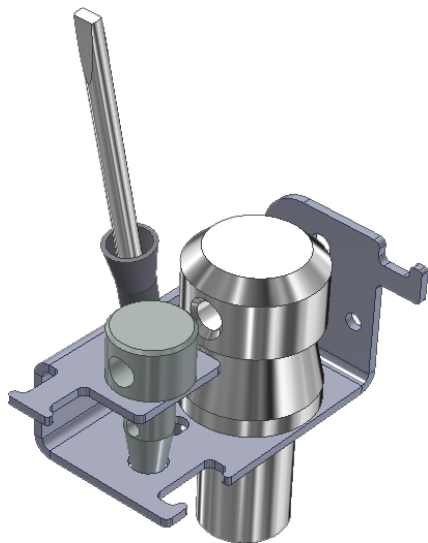
Pos.	Article number	Article
1	A1082	Adapter SW166
2	A0599	Locking bar
3	A1164	Tension bolt M16
4	A1165	M24 tension bolt
5	A1158	Probing auger 2m D60
6	A1330	Guide clamp toggle
7	A1120	Guiding Tongs NW50 cranked set (2 pieces)
8	A1153	Small parts set

DOKU KIT SET consisting of:

Pos.	Article number	Article
9	A0106	Doku Kit KR D 30
10	A1162	Measuring Unit
11	A1186	Doku Kit cable set
12	A0105	Doku Kit Support Mast 500mm



MACHINE ACCESSORIES



TOOL HOLDER (Art. No.: A0843)

For holding the most important tools directly at the work position



ADAPTER UNIVERSAL 6-EDGE SW90+350 (Art. No. : A1167)

- Extends the motor flange by 350mm, allowing it to be screwed in to 50mm below site level
- Other adapters can be used via the quick-change system



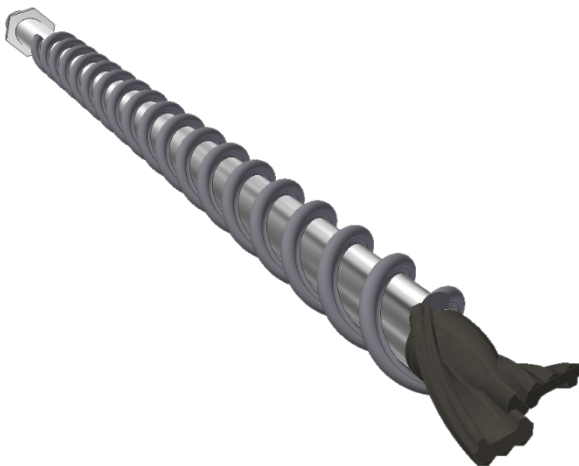
LOCKING BAR (Art. No.: A0599)

Used to loosen the quick-release system; also suitable for loosening tension bolts and adjusting the angle of the cross strut



PROBING AUGER D60

- For pre-piercing foundation positions
- Available in nominal lengths of 1m (item no.: A1157) and 2m (item no.: A1158); the total length corresponds to the nominal length+ 20cm



PRE-DRILL D100mm L2000mm (Art. no.: A1126)

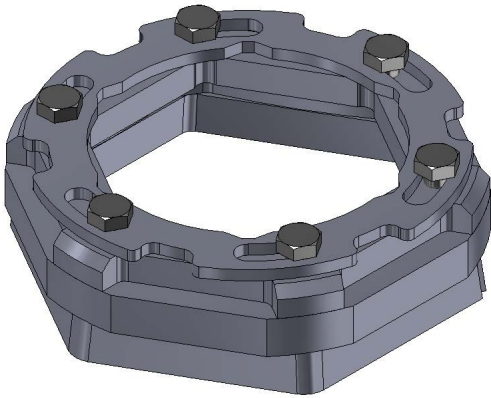
Extremely robust auger bit for pre-drilling in very dense soils



TENSION BOLT

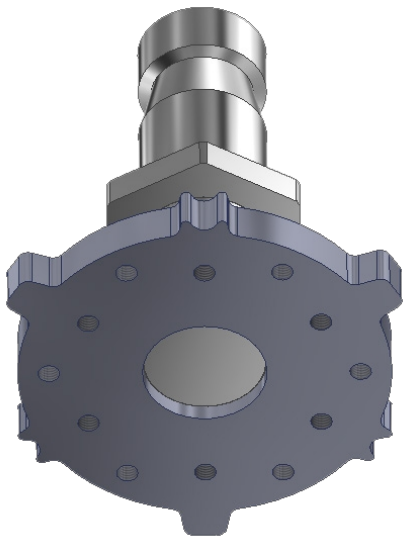
- Tension bolt for secure fixing of foundations with central nut
- Available for M12 (Art. No.: A1163); M16 (Art. No.: A1164); M24 (Art. No.: A1165)

MACHINE ACCESSORIES



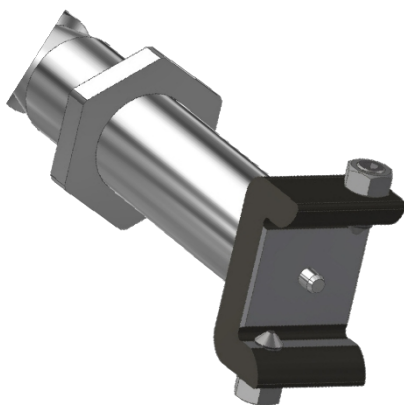
ADAPTER SW 166
Art. No.: A1082

- Available for SW128; SW200; SW245 (special sizes on request)



ADAPTER TK125; TK145; E140
Art. No.: A1086

- For installation of the E140 series.
- In addition to adapting adapters via TK125 and TK145 M12



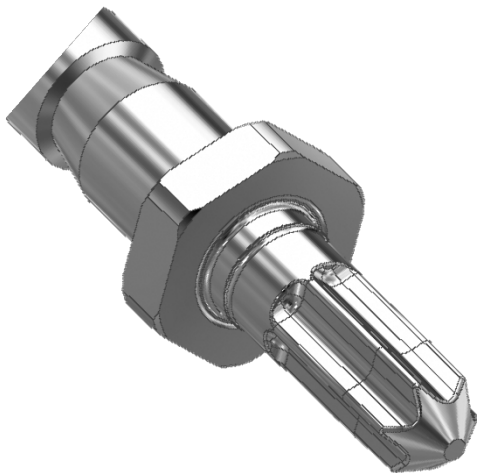
ADAPTER U
Art. No.: A1087

Adapter for screwing in the U-series



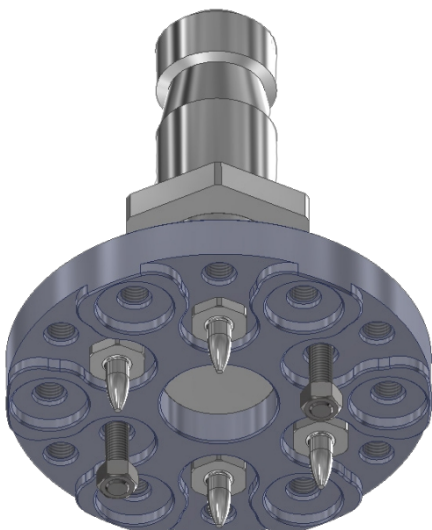
ADAPTER G

- Adapter for screwing in the KSF G series
- G76-3xM16 (item no.: A1073)
- G76-4xM16 (item no.: A1074)
- G89-4xM12 (item no.: A1075)
- G114-4xM16 (item no.: A1072)



ADAPTER Q 60 Art. no.: A1078

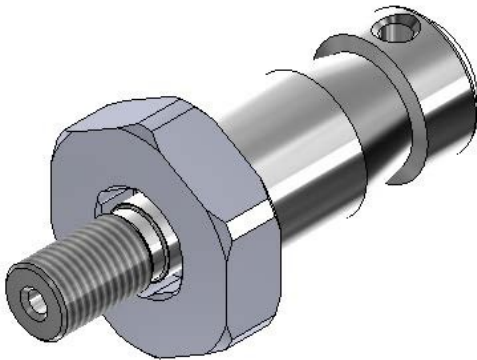
- Adapter for screwing in the KSF S 60 series



ADAPTER TK116; TK167; TK180, Art.No.: A1085

- For the installation of flange foundations with the pitch circles 116mm; 167mm; 180mm
- It is recommended to transmit the torque via 4 driving pins and 2 locking screws

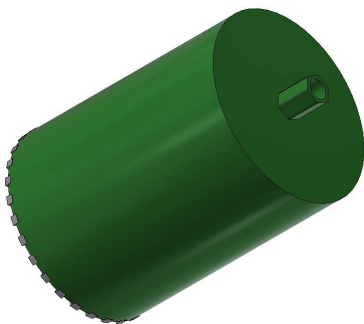
MACHINE ACCESSORIES



ADAPTER CORE DRILLING 1 1/4"

Art. no.: A1187

- Adapter for core drill bits
- Connection thread 1 1/4" and hole for rinsing/cooling water



DRILL BIT 300mm

Art. no.: A1182

CIRCUMFERENTIAL / CUTTING SPEEDS

The circumferential speed is for the function and service life of the drill bit particularly important. The recommended peripheral speeds are 2-5 m/s for impregnated crowns during wet drilling.

CONTACT FORCES FOR DRILL BITS

The contact pressure of the drill bit on the material to be drilled is another important factor influencing the drilling result. The required contact pressure depends on the contact surface of the diamond segments on the material to be drilled.

Contact pressure for drilling in concrete: approx. 200-250 N/cm² (1 N corresponds to approx. 0.1 kp or approx. 0.1 kg weight force).

ATTENTION:

Excessive pressure force leads to increased segment wear and thus to a reduction in the service life of the drill bit. If the pressure force is too low, the cutting edges of the diamond will be polished and drilling progress will be reduced.



ADAPTER AUGER

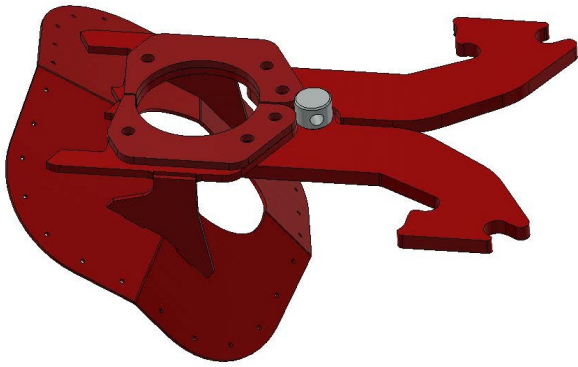
S4 Art. no.: A1181

- Adapter for auger bit (S4)
- Diameter 65mm

AUGER DRILL S4 250mm

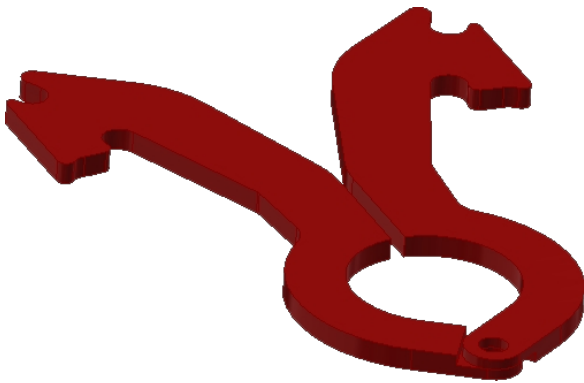
Art. no.: A1180





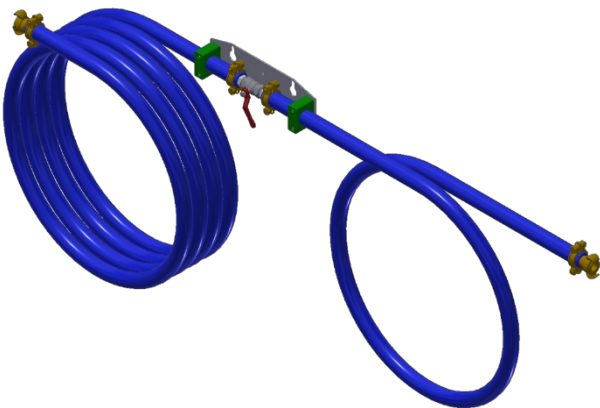
DRILLDUST DEFLECTOR FOR HAMMER in 3 sizes

- 3" Hammer (Art.No.: A1100)
- 4" Hammer (Art.No.: A1101)
- 5" Hammer (Art.No.: A1102)



GUIDING TONGS

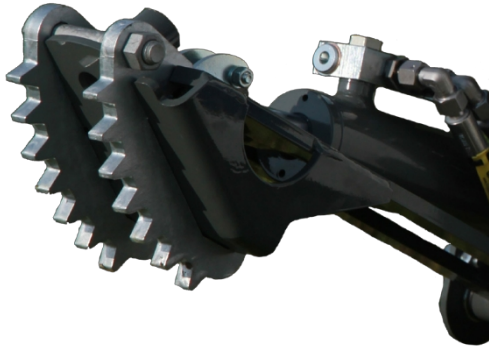
- Guiding tongs NW 50 cranked (Art.No.: A1120)
- Guiding tongs NW 114 (Art.No.: A1117)
- Guiding tongs with sleeve (+version)
 - NW 85+ (D60+12) (Art.No.: A1121)
 - NW 97 (D76+10) (Art.No.: A1122)
 - NW 100 (Art.No.: A1115)
 - NW 111+ (D89+10) (Art.No.: A1116)
 - NW 114 (Art. no.: A1117)
 - NW 158+ (D114+20; 139+10) (Art.No.: A1118)
 - NW 240 (Art. no.: A1119)
- Special sizes on request



COMPRESSED AIR HOSE KIT (Art. No.: A1109)

- For mounting on the control panel; with ball valve for the compressed air supply when drilling with the down-the-hole hammer

MACHINE ACCESSORIES



CLAW SHOE (Art. No.: A1417)

- 4 pieces



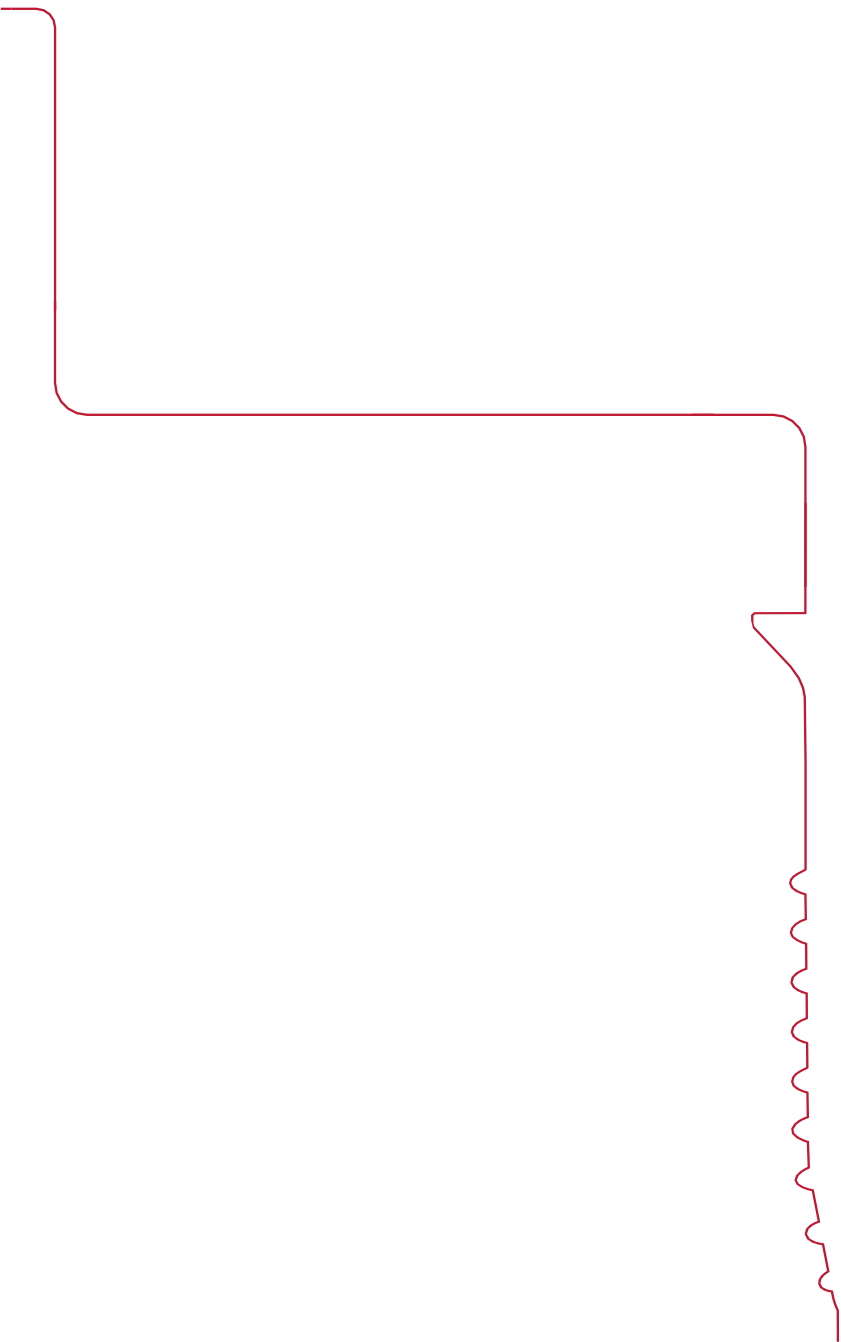
CROSS BEAM SUPPORT (Art. No.: A1418)

- For stabilizing and supporting the machine during turning operations with high torques



WATER PUMP KIT (Art. No.: A1161)

- For supplying water during core hole drilling or reducing dust formation during down-the-hole hammer drilling
- 20 liter canister with suction filter
- 12 volt pump 50l/h incl. wiring harness
- Atomizer nozzle for down-the-hole hammer drilling



KRINNER

Krinner Schraubfundamente GmbH

Passauer Strasse 55

D-94342 Strasskirchen

Phone: +49 9424 777 4930

www.krinner.io

service@krinner.io